

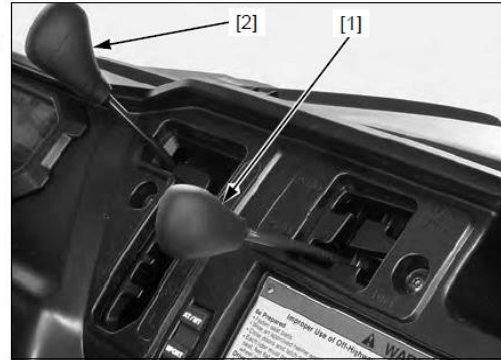
Rear Differential Lock Cable Adjustment

REAR DRIVING MECHANISM

REAR DIFFERENTIAL LOCK CABLE ADJUSTMENT

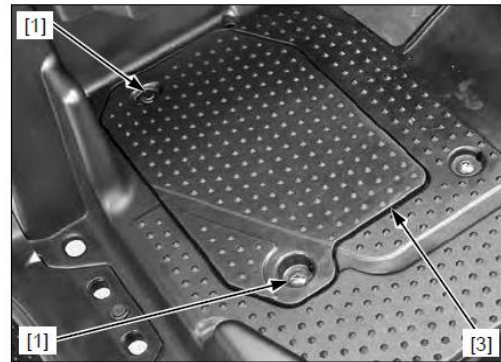
Lift the cargo bed.

Set the drive mode selector lever [1] to the 2WD position and the shift lever [2] to the P position.

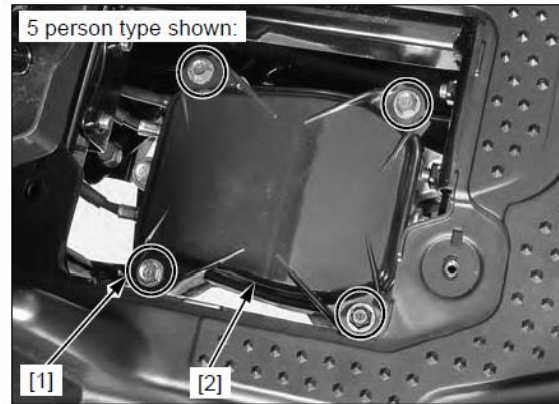


5 person type only: Remove the following:

- screw [1]
- clip [2]
- maintenance lid [3]



- four bolts [1]
- selector case cover [2]

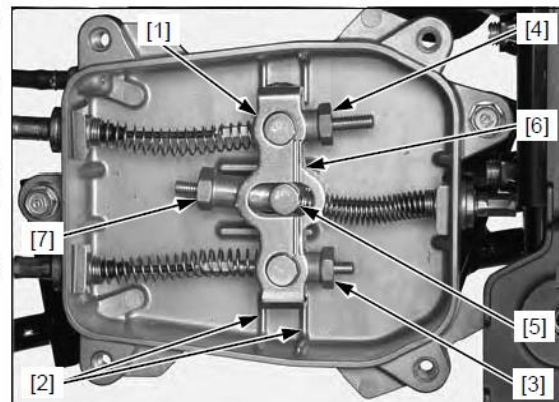


Position the selector arm [1] between the selector case lugs [2] by turning adjusting nuts A [3] and B [4].

Align the rear end of the arm joint pin [5] with the index lines [6] on the selector arm by turning adjusting nut C [7].

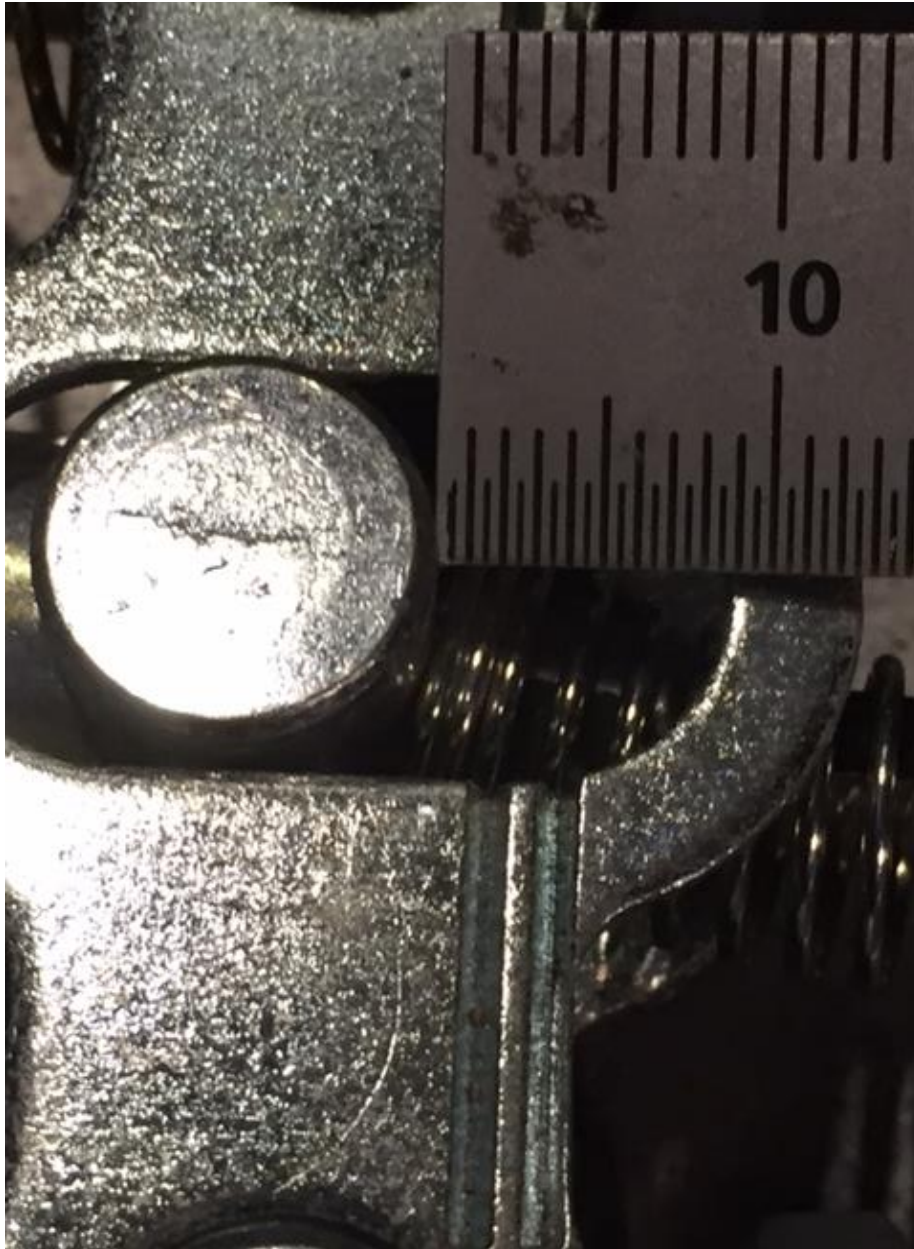
Make sure that the clearance between the rear ends of the arm joint pin and selector arm slot is 5 – 7 mm (0.2 - 0.3 in).

Install the removed parts in the reverse order of removal.



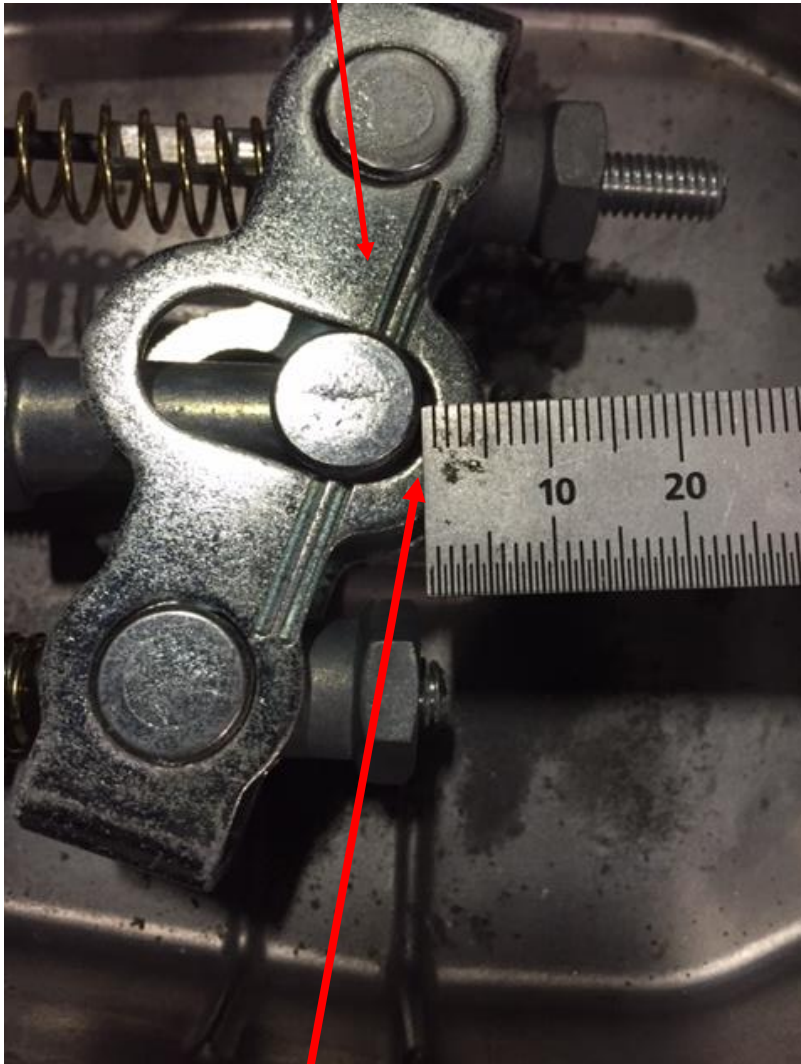


Drive mode selector is in 2WD
and Shift Lever is in P Position



Drive mode selector is in 2WD and
shift lever is in P position. Close up
picture

Drive mode selector is in 2WD and
shift lever is in H position



Key Point: When shift lever is placed
into any drive gear, (High or Low) the
rear linkage cable can not make
contact with the selector arm. If this
occurs the unit will go into each
mode but will not display on
instrument panel.



Drive mode selector is in 2WD and
Shift lever is in H Position. Close up
Picture