



23001 Industrial Blvd, Rogers, MN 55374 / 1-866-527-7637
www.motoalliance.com

VIPER Plow Mount

MA11720

Honda Talon Plow Mount

Thank you for purchasing our VIPER plow mount. You now own a premium custom plow mount which allows you to use your plow with your UTV / SxS. Please note the following instructions and heed all warnings.

- Please use common sense when operating your UTV / SxS
- Be observant of moving parts causing entanglement, use extreme caution!

SEVERE INJURY OR DEATH MAY RESULT IF YOU ARE NEGLIGENT.

MA11720

Honda Talon Plow Mount



motoalliance

23001 Industrial Blvd

Rogers, MN 55374

866.527.7637

Please verify that all hardware and parts are included in your package.

Kit Contents:

Item	Description	QTY
1	MA11720-W1 Main Mount Plate	1
2	MA11720-W2 Front Buckle	1
3	MA11720-W3 Rear Buckle	1
4	MA11720-6 Front Buckle Washer	3
5	3/8"-16 x 1.25" Serrated Flange Bolt	6

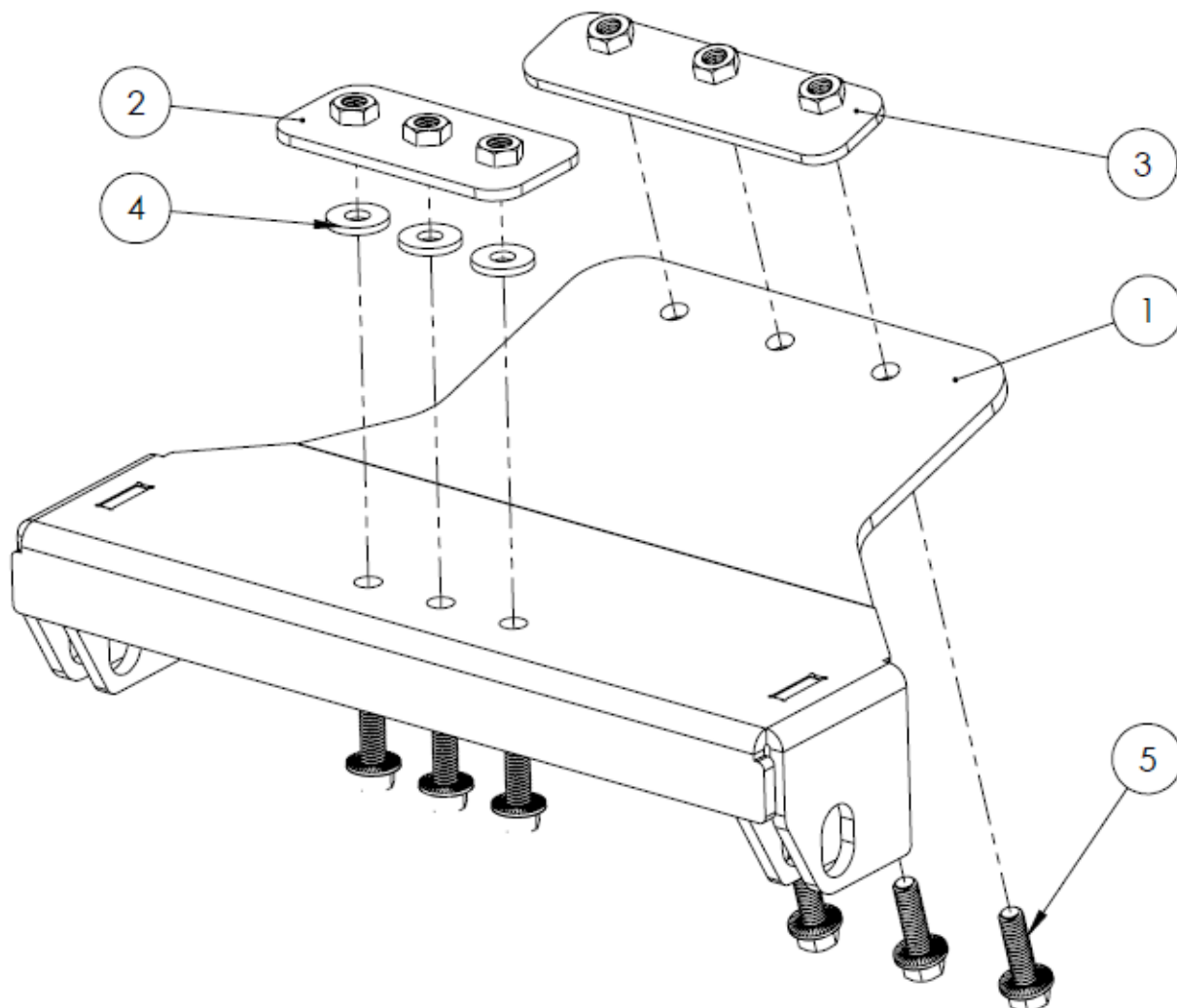


Figure 1

MA11720

Honda Talon Plow Mount



motoalliance

23001 Industrial Blvd

Rogers, MN 55374

866.527.7637

1. Position the MA11720-W2 Front Buckle and MA11720-W3 Rear Buckle on the topside of the Talon frame as shown in Figure 2. Position the weld nuts so they align with the two sets of three holes.

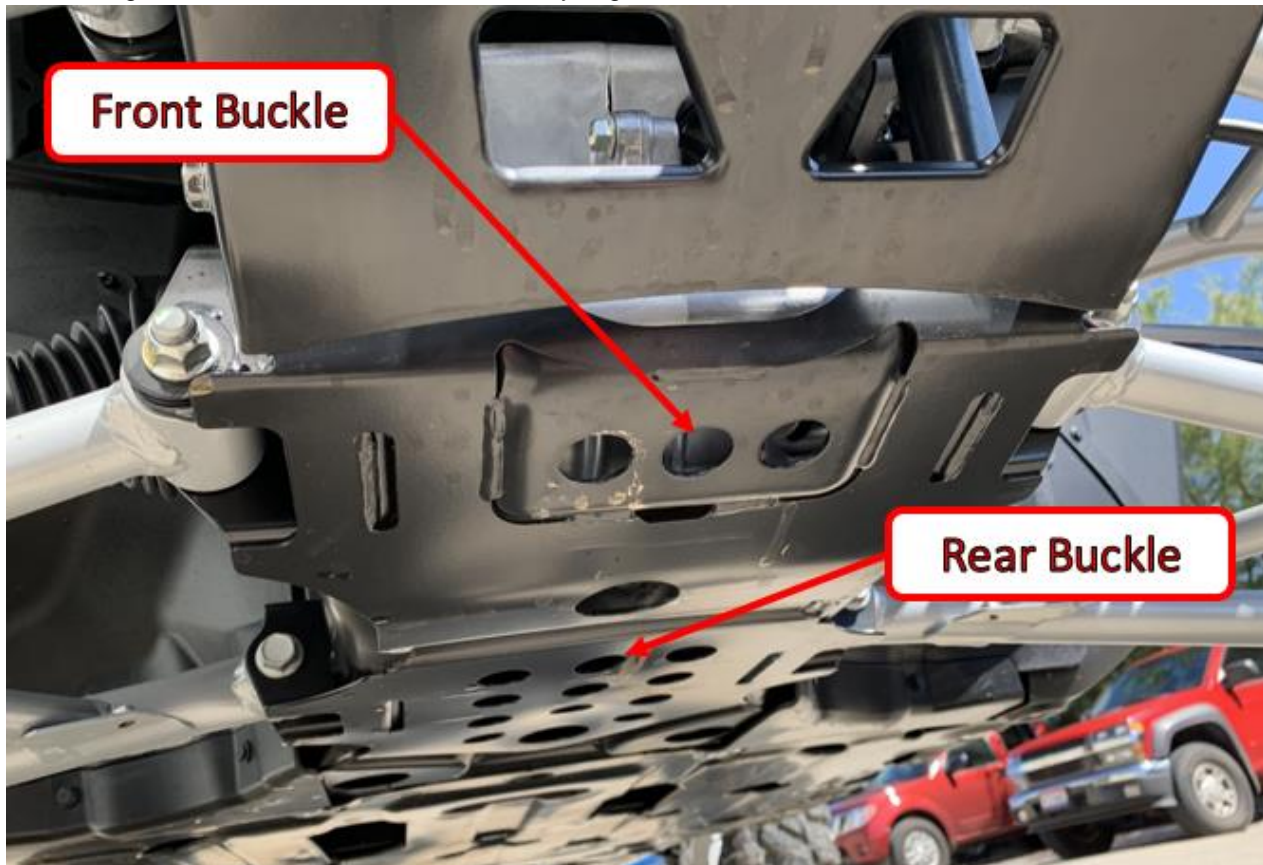


Figure 2

2. Hold the MA11720-W1 Plow Mount up to the bottom of the Talon and align the rear three holes with the Rear Buckle Holes. Use three of the supplied 3/8" x 1.25 Serrated Flange Bolts to loosely attach the back of the mount to the frame. Do not tighten at this time.

3. Verify that the weldnuts in the Front Buckle are lined up with the center of the holes in Talon frame as shown in Figure 3. This is important because the Front Buckle Washers need to be aligned with Front Buckle, the Talon frame and Main Mount Plate.



Figure 3

4. With the mount hanging loosely in place use the three remaining 3/8" bolts and the three Front Buckle Washers to secure the front of the mount plate. **NOTE: The Front Buckle Washers should fit inside the holes on the machine. It can require a little finesse to get them into place, but it is important for the security of the mount.** See Figure 4

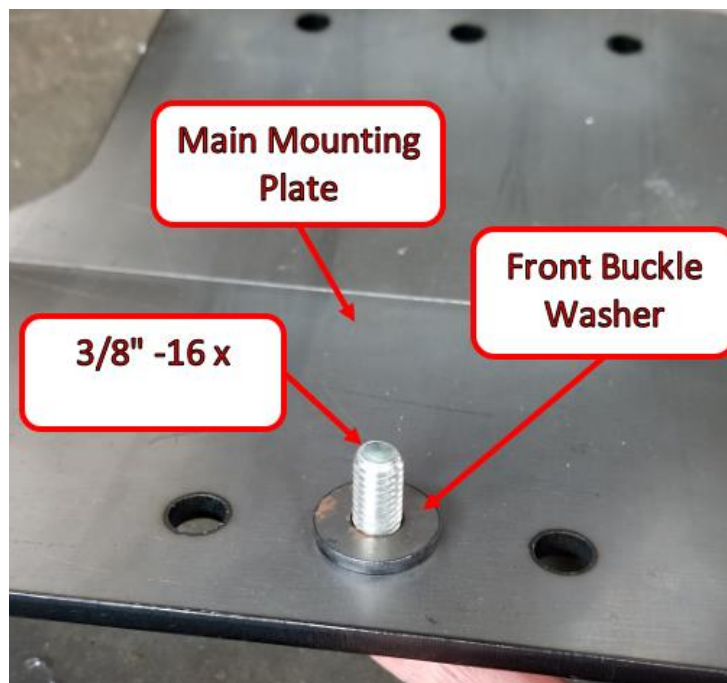


Figure 4

MA11720

Honda Talon Plow Mount



motoalliance

23001 Industrial Blvd

Rogers, MN 55374

866.527.7637

5. Make sure the mount is square and flush with the bottom of your machine and tighten all hardware.

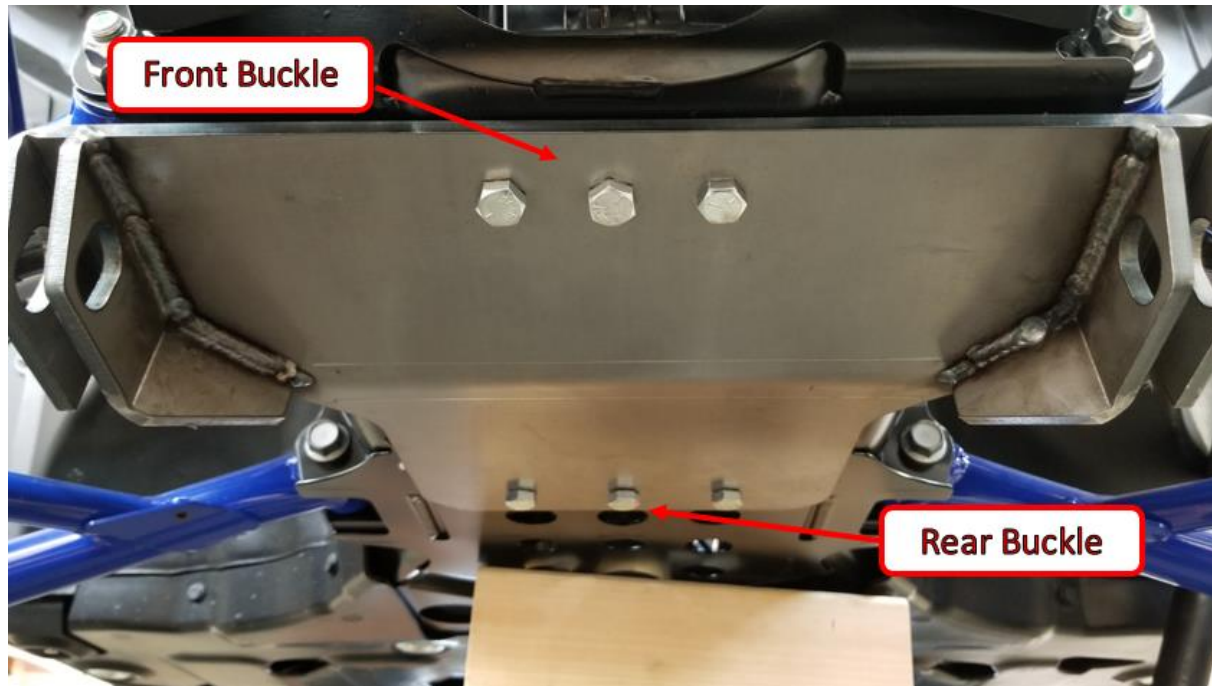


Figure 5

6. Attach the plow system to the plow mount per the manufacturer's instructions.
7. After the first few rides verify that all hardware is secure as it can move around initially.