



INSTALLATION INSTRUCTIONS

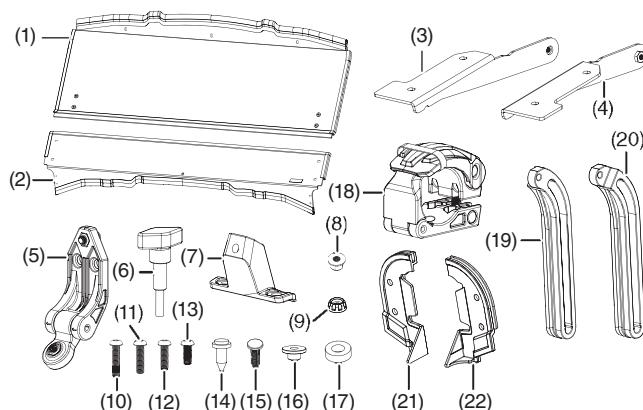
Accessory
**2-PIECE FOLDING POLY
WINDSCREEN
P/N 0SR71-HL4-A10,
0SR71-HL4-A20**

Application
**SXS1000M3/M3P/M3LE
SXS1000M5D/M5P/M5LE**

Publication No.
MII 17492
Issue Date
August 2020

Honda Dealer: Please give a copy of these instructions to your customer.

PARTS LIST



No.	Description	Qty
(1)	Upper windscreen	1
(2)	Lower windscreen	1
(3)	Right bracket	1
(4)	Left bracket	1
(5)	Hinge	3
(6)	Knob	2
(7)	Center mounting bracket	1
(8)	6 mm flange nut	2
(9)	Plastic push nut	4
(10)	6 x 30 mm button head bolt	2
(11)	6 x 25 mm button head bolt	1
(12)	6 x 20 mm button head bolt	7
(13)	6 x 16 mm button head bolt	3
(14)	Trim clip	10
(15)	Plastic push dart	4
(16)	Top hat spacer	8
(17)	Nylon spacer	2
(18)	Cam lock clamp	5
(19)	Right swing arm	1
(20)	Left swing arm	1
(21)	Left sealing gasket	1
(22)	Right sealing gasket	1
(23)	Installation Instruction URL (not shown)	1

TOOLS REQUIRED

4 mm hex wrench
Torque wrench
Power drill
5/16 inch (8 mm) drill bit

TORQUE CHART

Tighten all screws, bolts, and nuts to their specified torque values. Refer to the Service Manual for the torque values of the removed parts.

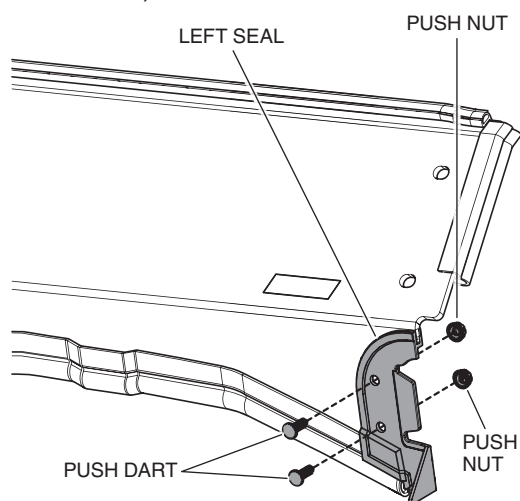
Item	N·m	kgf·m	lbf·ft
6 mm screw and nut	5	0.5	4

USE AND CARE INFORMATION

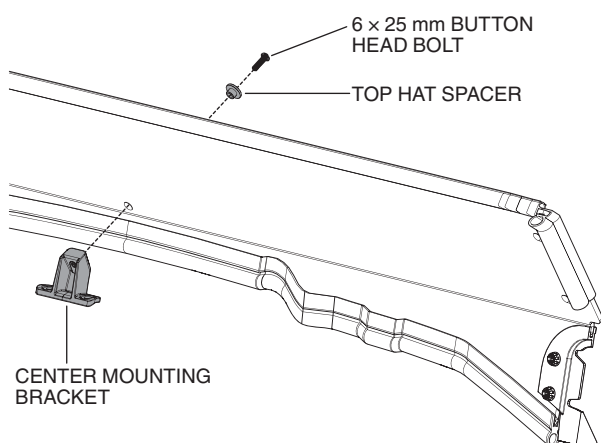
- Check the accessory mounts frequently and retighten if necessary.
- Replace this accessory with a new one if it is damaged or discolored excessively.
- When this accessory becomes dirty, rinse it thoroughly with cool water to remove loose dirt and then wash with a clean cloth or sponge.
- Do not use a brush to clean this accessory as it may scratch the surface.
- Never use petroleum solvents such as gasoline, thinner, benzene, acid or alkaline cleaners.

INSTALLATION

1. Install the left and right sealing gaskets to the bottom corners of the lower windscreen using two plastic push darts and plastic push nuts per side (four darts and nuts total).



2. Install the center mounting bracket to the inside of the lower windscreen using one top hat spacer and 6 x 25 mm button head bolt.

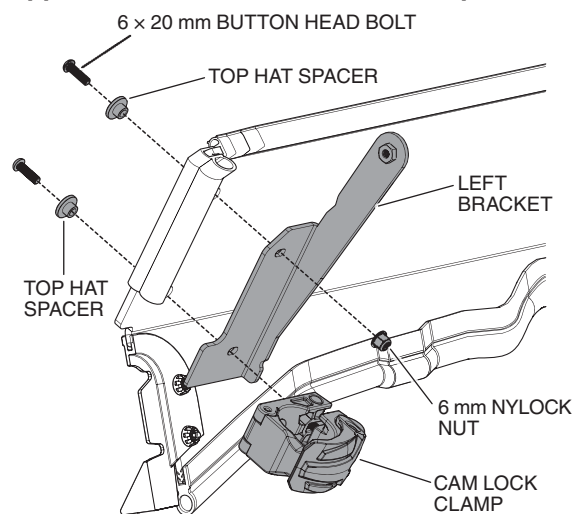


3. Place the left bracket over the holes on the left side of the inside of the lower windscreen. Install the bracket through the top hole using one 6 x 20 mm button head bolt, top hat spacer, and 6 mm nylock nut.
4. Install a cam lock clamp through the lower hole in the left bracket using one 6 x 20 mm button head bolt and 6 mm nylock nut.

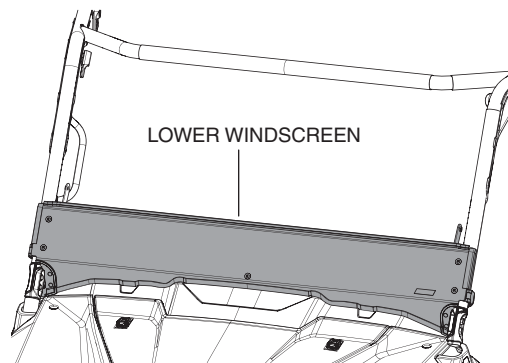
5. Repeat steps 3-4 to install the right bracket.

NOTE: Install the clamps so that they open towards the outside of the windscreen.

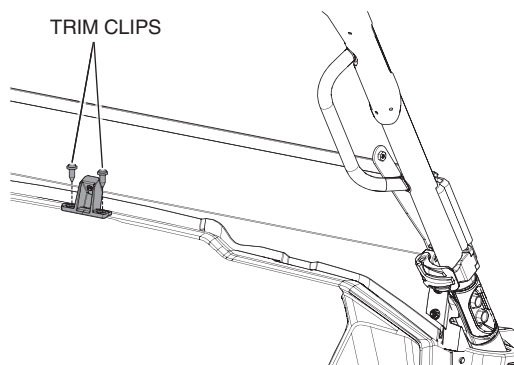
NOTE: Install the button head screw through the upper hole on the inside of the clamp.



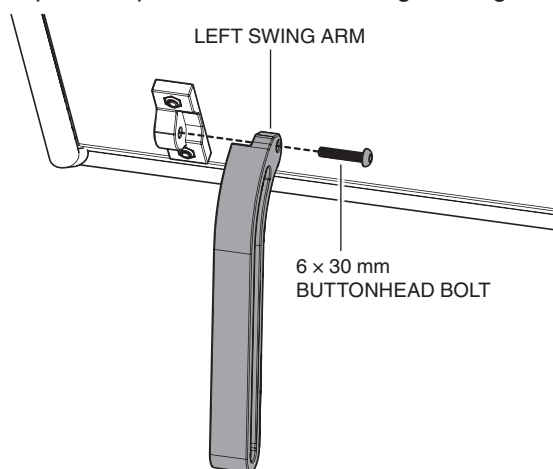
6. Place the lower windscreen onto the vehicle frame. Guide the flaps on the sealing gaskets into the recessed areas in the base of the OPS tubes. Seal the bottom edge of the windscreen along the front hood as shown.



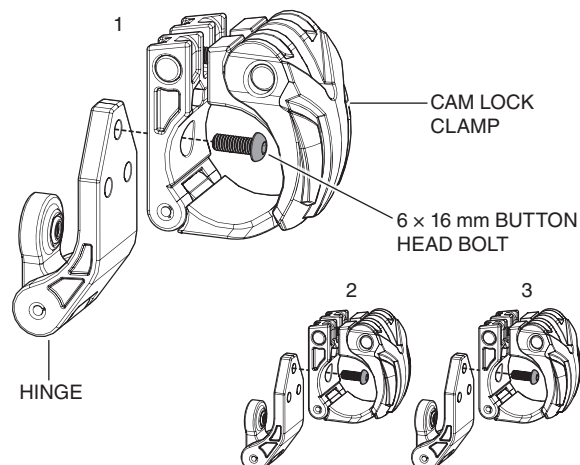
7. Using the center mounting bracket as a template, make a mark on the top edge of instrument panel through each hole in the bracket.
8. Remove the windscreen and drill holes through the marked points on the instrument panel with a 5/16 inch (8 mm) drill bit.
9. Reinstall the windscreen and secure it to the mounting bracket by placing trim clips through the mounting bracket and into the holes drilled in Step 8.



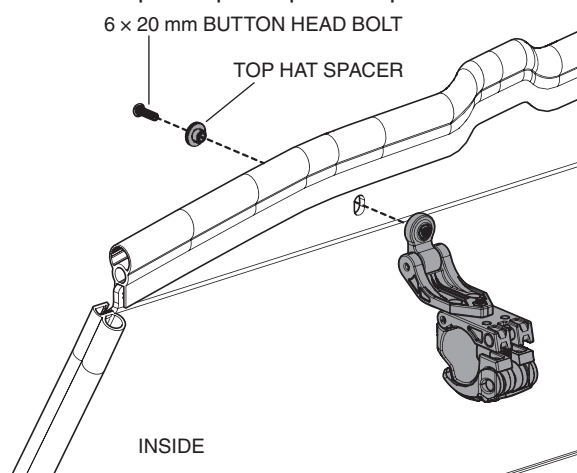
10. Install the left swing arm to the plastic bracket on the lower left side on the inside of the upper windscreen using one 6 × 30 mm socket head bolt.
11. Repeat the process to install the right swing arm.



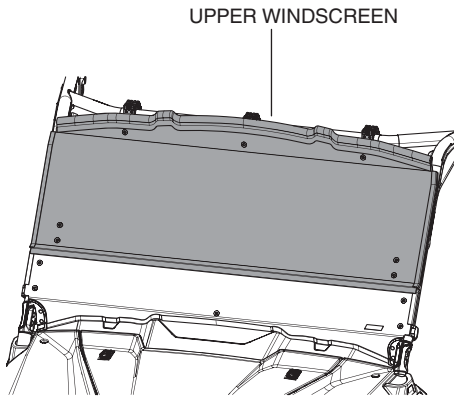
12. Install the three cam lock clamps to the hinges using three 6 × 16 mm button head bolts.



13. Install three cam lock clamps at the holes in the upper windscreen using one 6 × 20 mm button head bolt and top hat spacer per clamp.



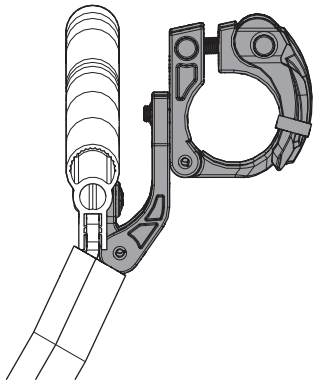
14. Open the clamps on the upper windscreen and place the windscreen onto the A-pillar OPS tubes as shown. Once the inside of the clamps are contacting the OPS tube, rotate the windshield down until the lower gasket is making contact with the top of the lower windscreen.



15. Snap the top clamps closed once the windshield is in place. To ensure proper fitment, close the cam locks once the gap between the edge of the windscreen and the A-pillars is even along the entire length of the windscreen.

NOTE: Clamp tension can be adjusted by rotating the threaded arm clockwise to tighten, counter-clockwise to loosen.

- Approximate angle of the cam locks shown:



16. Line up the slot in the left swing arm with the weld nut on the end of the left bracket. Hold a nylon spacer between the swing arm and weld nut and thread a knob into the weld nut.
17. Repeat the process to install the second knob on the right side of the windscreen.

