



INSTALLATION INSTRUCTIONS

Accessory
BED RAILS
P/N 0SB18-HL5-A00

Application

SXS520

Publication No.

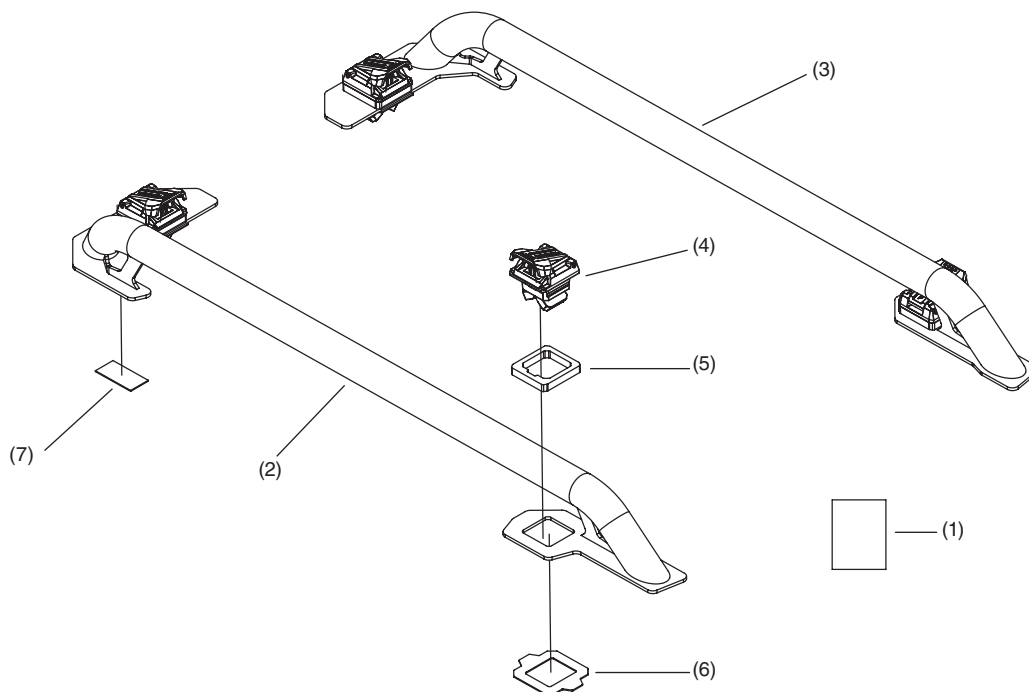
MII 17623

Issue Date

November 2021

Honda Dealer: Please give a copy of these instructions to your customer.

PARTS LIST



No.	Description	Qty
(1)	Installation Instructions URL	1
(2)	Driver side Bed Rail	1
(3)	Passenger side Bed Rail	1
(4)	Pro-Connect™ latch	4
(5)	Rubber Spacer	4
(6)	Snap Ring	4
(7)	Self-Adhesive Rubber Strips	4

⚠ WARNING: Do not sit or ride on bed rails; they are not intended for seating. Bed rails could break or you could be thrown from the vehicle, resulting in **SERIOUS INJURY** or **DEATH**. All passengers must sit in a designated seating position with a working seat belt.

NOTICE:

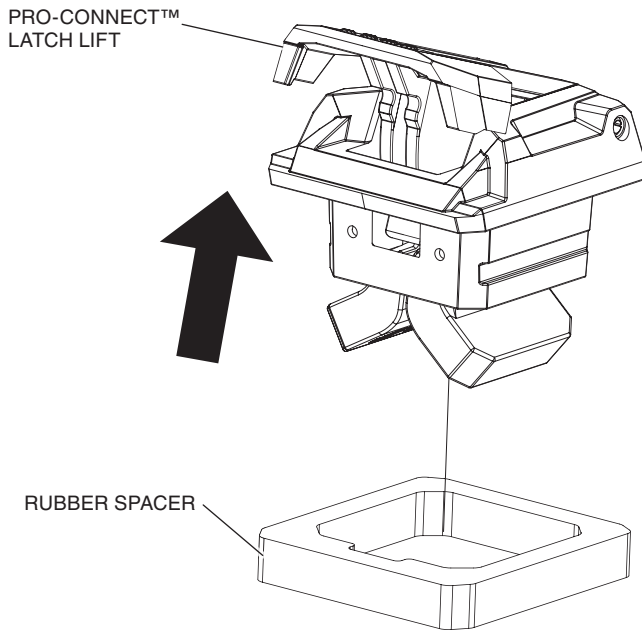
- Only use bungee cords to secure cargo; use of ratcheting tie down straps could damage the bed rails and vehicle.

NOTE:

- Never use SxS bed rails to tow something with the vehicle.
- Always make sure the Pro-Connect™ latches are properly engaged before riding.
- Please read and follow all instructions and warning supplied with the bed rails.

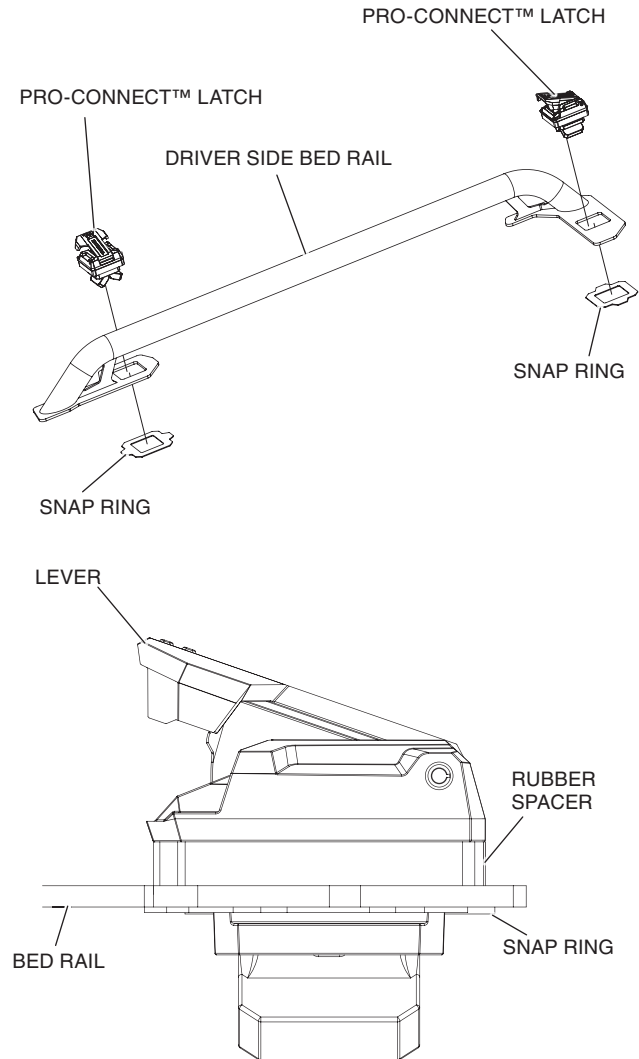
INSTALLATION

1. Lift the lever on each Pro-Connect™ latch to unlock them and install the Rubber Spacer.



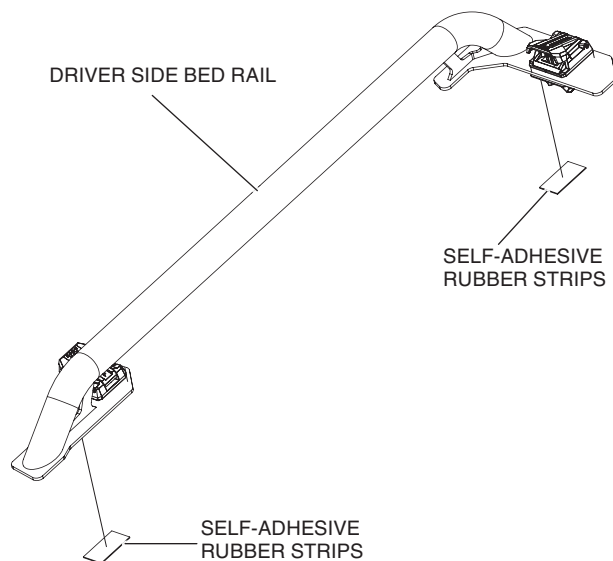
2. Insert the Pro-Connect™ latch assembled with the rubber spacers in the Driver Bed Rail installation square holes and secure them by using the Snap Rings.

NOTE: Pay attention to the assembly direction of the Pro-Connect™ latch to ensure proper fitment. They must be installed as shown on the picture below.



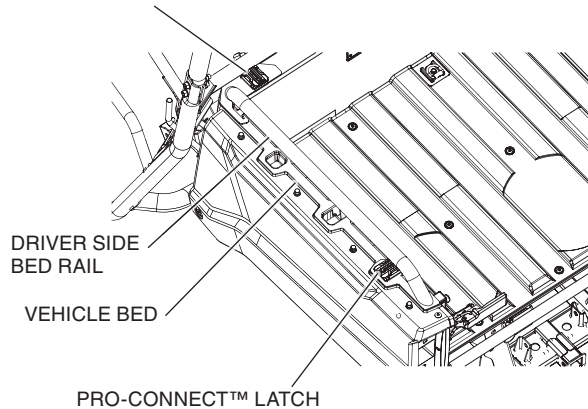
3. Remove the film from the self-adhesive rubber strips and stick them to the driver bed rails in the position shown in the view below.

NOTE: Clean the mating surface of the bed rail with alcohol before installing rubber strips.



4. Make sure the Pro-Connect™ latch levers are open then position the Driver Bed Rail onto the Vehicle Bed by aligning each Pro-Connect latch with his corresponding bed installation hole. Lock the rail in place by pressing down the two Pro-Connect™ latch levers.

PRO-CONNECT™ LATCH



5. Repeat steps 1 to 4 for the Passenger side Bed Rail. To remove the Bed Rail from the vehicle, lift the lever of each Pro-Connect™ latch and lift the accessory.